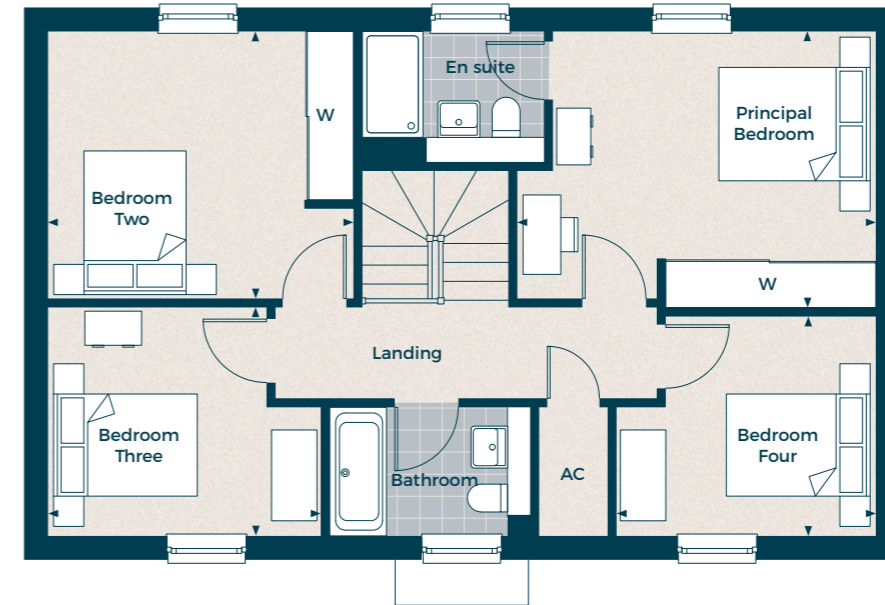


# The Rushley

Four bedroom detached home

Plots 430 & 433

Gross Internal Area: 146.0 sq m (1,571 sq ft)



## First Floor

- Principal Bedroom**  
4.74m x 3.65m 15' 7" x 12' 0"
- Bedroom 2**  
4.04m x 3.53m 13' 3" x 11' 7"
- Bedroom 3**  
3.61m x 3.02m 11' 10" x 9' 11"
- Bedroom 4**  
3.43m x 2.90m 11' 3" x 9' 6"



## Ground Floor

- Living Room**  
4.03m x 6.67m 13' 3" x 21' 11"
- Kitchen / Dining / Family**  
4.73m x 6.67m 15' 6" x 21' 11"

### Key:

AC - Airing Cupboard C - Cupboard W - Built-in Wardrobe ▲ - Front Entrance ◀▶ - Depicts where measurements have been taken from

Individual plots vary in size, please ask the Sales Consultant for details.

Computer generated images are indicative only. Floor plans shown are indicative only. To increase legibility these plans have been sized to fit the page and as a result may be of a different scale to others within this document. Location of windows, doors, wardrobes, kitchen units, appliance spaces and bathroom fittings may differ. Garden and Terrace is indicative only. All measurements may vary within a tolerance of 5%. The dimensions are not intended to be used for carpet sizes, appliance sizes or items of furniture.