

The Rowley (III)

Three bedroom terrace home

Mid-terrace plot 50. End-terrace: plot 53, 57, 61, 69, 77, 81 & 87

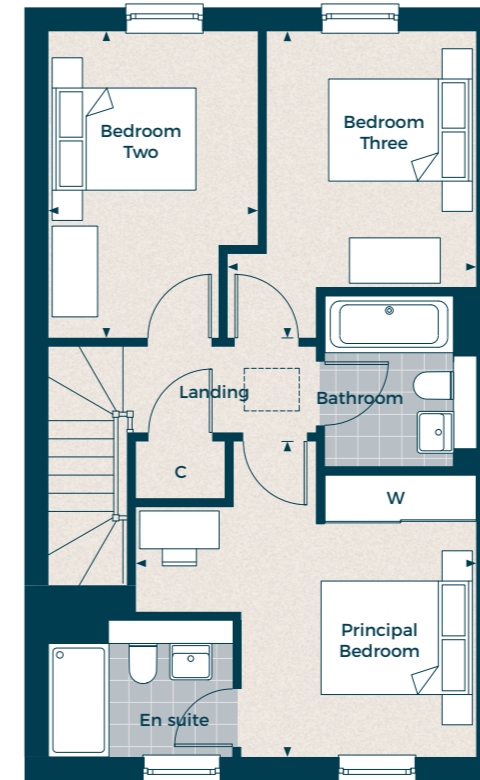
Gross Internal Area: 108.52 sq m (1,168 sq ft)



Key:

C - Cupboard W - Built-in Wardrobe ▲ - Front Entrance ◀▶ - Depicts where measurements have been taken from

Individual plots vary in size, please ask the Sales Consultant for details.



First Floor

Principal Bedroom

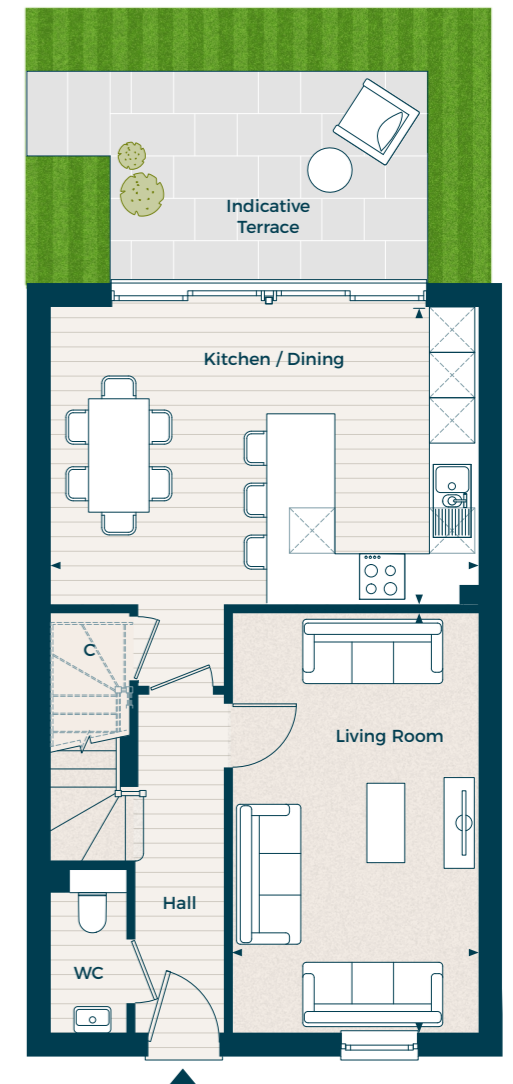
4.50m x 4.17m 14' 9" x 13' 8"

Bedroom 2

4.05m x 2.77m 13' 4" x 9' 1"

Bedroom 3

4.05m x 3.29m 13' 4" x 10' 09"



Ground Floor

Living Room

5.54m x 3.25m 18' 2" x 10' 8"

Kitchen / Dining

5.66m x 3.93m 18' 7" x 12' 11"