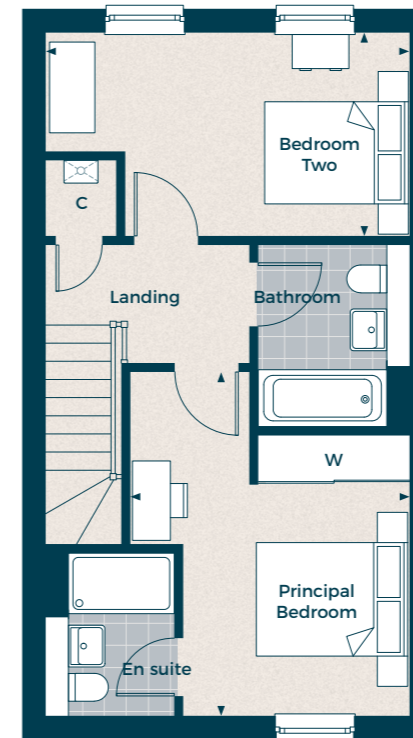


The Barrow (I)

Two bedroom terrace home

Plots 56*, 60*, 68*, 72*, 76*, 80*, 86* & 135*.

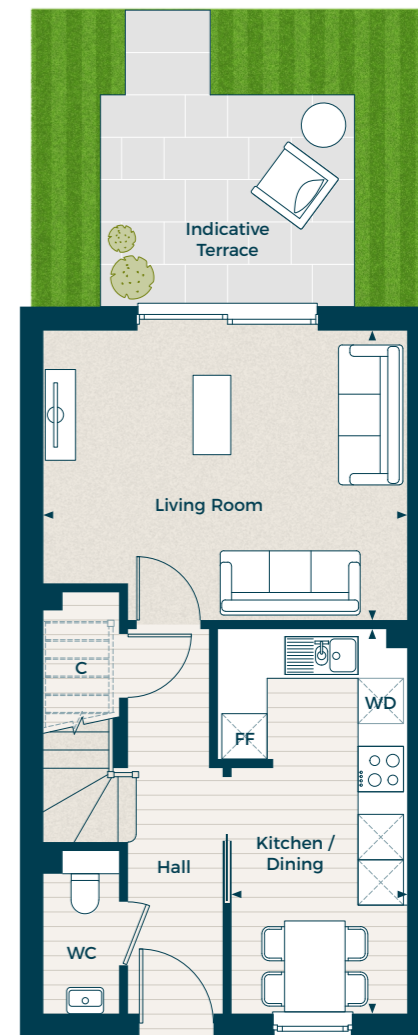
Gross Internal Area: 86.9 sq m (935 sq ft)



First Floor

Principal Bedroom
4.55m x 3.69m 14' 11" x 12' 1"

Bedroom 2
4.81m x 2.69m 15' 9" x 8' 10"



Ground Floor

Living Room
4.81m x 3.83m 15' 9" x 12' 7"

Kitchen / Dining
5.09m x 2.32m 16' 8" x 7' 7"

Key:

C - Cupboard W - Built-in Wardrobe ▲ - Front Entrance ◀▶ - Depicts where measurements have been taken from

* Denotes handed plot. Individual plots vary in size, please ask the Sales Consultant for details.

Computer generated images are indicative only. Floor plans shown are indicative only. To increase legibility these plans have been sized to fit the page and as a result may be of a different scale to others within this document. Location of windows, doors, wardrobes, kitchen units, appliance spaces and bathroom fittings may differ. Garden and Terrace is indicative only. All measurements may vary within a tolerance of 5%. The dimensions are not intended to be used for carpet sizes, appliance sizes or items of furniture.