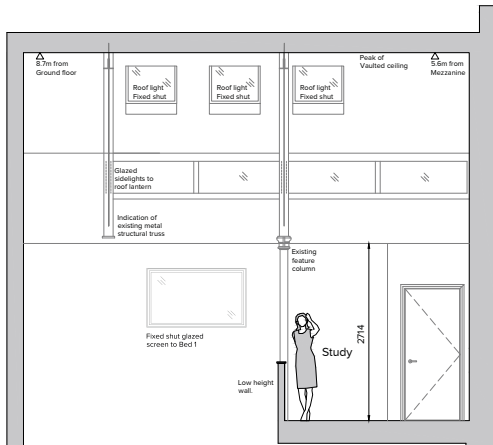


PLOT KB11

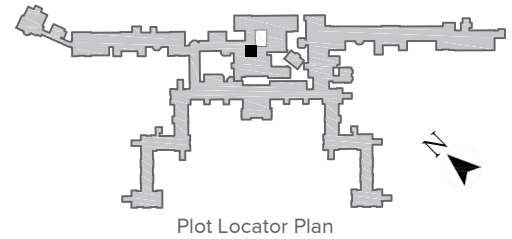
1 Bedroom House

Ground/First Floor
Total area 723.88 sq ft (67.25 sq m)

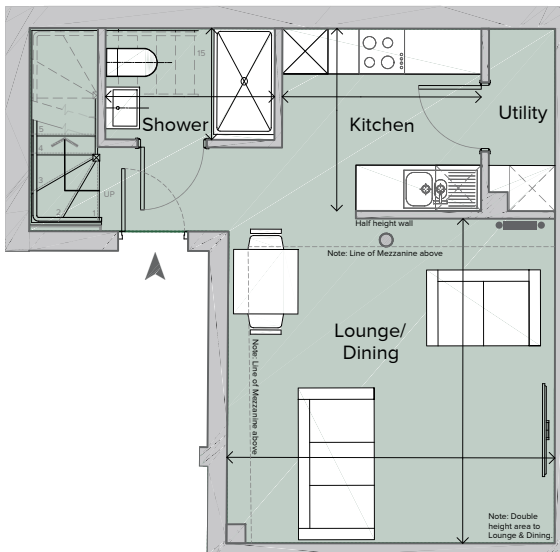
Kitchen	7' 11" x 8' 7"	(2.40m x 2.62m)
Lounge/Dining	14' 2" x 14' 0"	(4.27m x 4.32m)
Bedroom 1	9' 4" x 13' 8"	(2.85m x 4.18m)
Shower	7' 4" x 4' 10"	(2.22m x 1.46m)
Ensuite	4' x 9' 5"	(1.22m x 2.87m)
Study	9' 3" x 9' 8"	(2.83m x 2.94m)



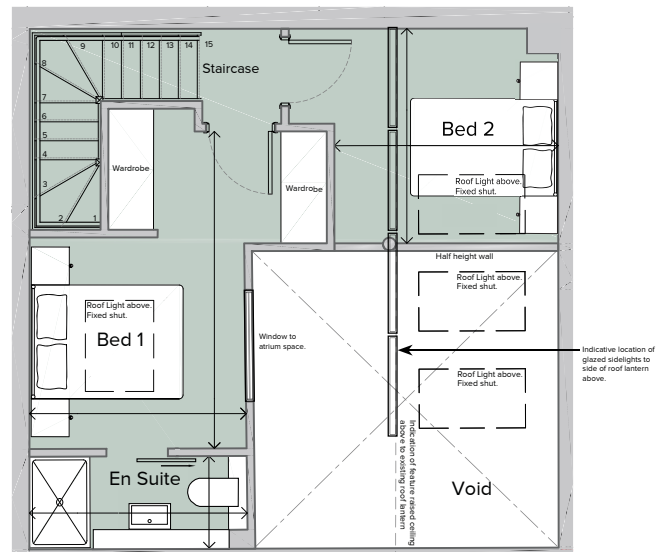
Section Through Mezzanine



Plot Locator Plan



Ground Floor Plan



First Floor Mezzanine Plan